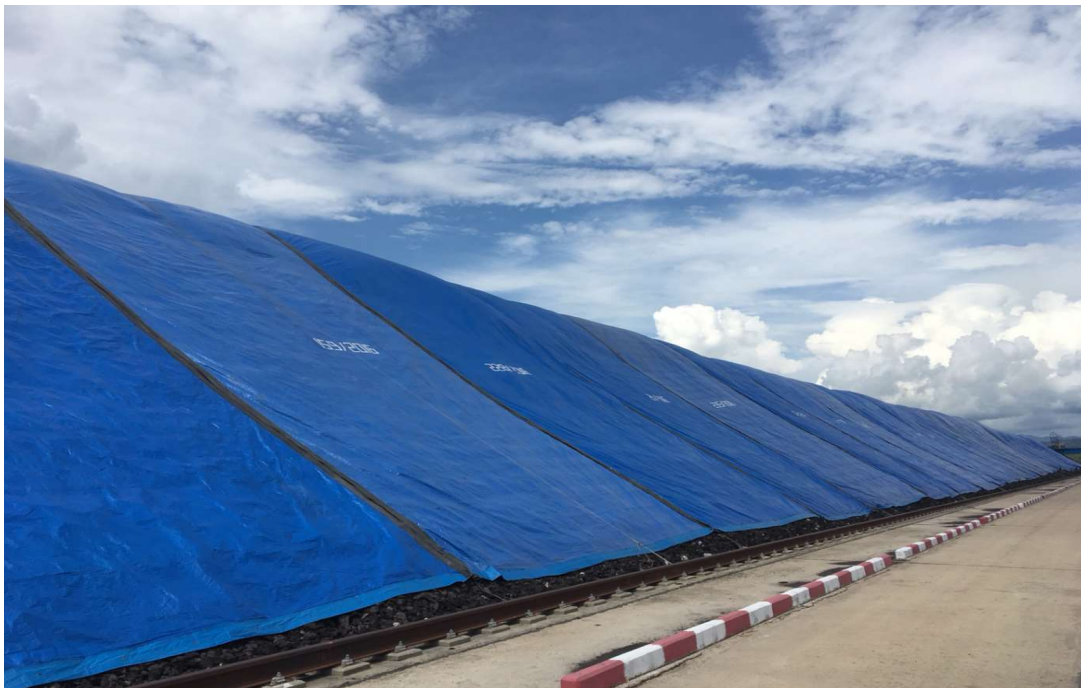


## **Supply the interwoven plastic sheets for coal stockpile covering**

**Date 1 March 2025**



NNN Building 4<sup>th</sup> Floor/Room No. D5, Boulichan Road, Phonsinouan Village,  
Sisattanak District, Vientiane Capital, Lao PDR.

Tel: + 856 21 223911, 222315, 222482, 219381

Fax: + 856 21 222089

Phonchanh Office, Hongsa District, Xayaboury Province, Lao PDR.

Tel: + 856 74 266121 - 29

Fax: + 856 74 266120

**1. Purpose**

Hongsa Power Company would like to procure the Contractor who is responsible for supply the Interwoven Plastic Sheet to cover the Coal Stockpile amount **900 EA**. (300 ea per year)

**2. Required documents and product samples**

The Bidder shall submit documents and product samples for consider details are as follows:

**2.1 Price proposal**

2.1.1 Completely filled up ANNEX III: Price bid

**2.2 Commercial proposal and Corporate documents**

2.2.1 Completely filled up ANNEX IV: Commercial bid

2.2.2 Copy of Company Registered document

2.2.3 Company profile

2.2.4 Copy of Tax Certificate

2.2.5 In case of the Bidder is an authorized dealer for supply goods, such Bidder shall submit authorization letter, past experience, ISO certificate and related evidences presented to HPC for its consideration.

**2.3 Technical proposal**

2.3.1 Completely filled up ANNEX V: Specification of the interwoven plastic sheet

2.3.2 Physical and Mechanical Properties Certificate of Interwoven plastic sheet which specified as **item 5.1.6 and 5.1.7** by Thailand Textile Industry Development Institute, Rama 4 Road, Phra Khanong, Bangkok.

**2.4 Product samples**

2.4.1 Single side Laminate Coating Fabric plastic sheet 1 × 1 m. 2 EA.

2.4.2 Double side Laminate Coating Fabric plastic sheet 1 × 1 m. 2 EA.

**3. Submission of proposal**

The Bidder's proposal shall be submitted to HPC in four (4) separate sealed envelopes:

- **First (1<sup>st</sup>)** sealed envelope **Price Proposal Documents** shall contain:
  - a) Print copy of completely filled up **Annex III: Price Bid Form** in Clause 2.1.1 with company stamp or authorized signature
  - b) Print of the quotation with official heading of the Bidder's Company
  - c) USB Flash Drive containing the Excel file Annex III of item a) and PDF files of the Annex III of item a) and the quotation of item b).
- **Second (2<sup>nd</sup>)** sealed envelope **Commercial Proposal Documents** shall contain:
  - a) Print copy of completely filled up **Annex IV: Commercial Bid Form** in Clause 2.2.1 with company stamp or authorized signature.
  - b) Corporate documents as specified in Clause 2.2.
- **Third (3<sup>rd</sup>)** sealed envelope **Technical proposal documents** shall contain:

- a) Print copy of completely filled up **Annex V: Specification** in Clause 2.3.1 with company stamp or authorized signature
- b) Related documents as specified in Clause 2.3.
- c) USB Flash Drive containing the Excel file Annex V of item a) and PDF files of the Annex V of item a) and the corporate documents of item b)

The Bidder shall be submitted **the required documents and product samples** not later than **4:00 PM** local time on the day of **10 March 2025** to HPC's office at the address below.

**Hongsa Power Company Limited**

Attention: Ms. Phannipa Kiatbumrung (Division Manager - Procurement)  
3/37-38 Woravichai Road, Nai-Wieng District,  
Muang Nan, Nan Province 55000

#### 4. Acceptance and rejection of proposals

HPC reserves the right, at its sole discretion, to accept the quotation which in its own judgment is the most responsive and best quotation, to reject any and all quotation and to waive minor irregularities and informalities in any quotation submitted. HPC will reject any quotation which, in his judgment, is non-responsive. HPC will not be bound to award a contract to the Bidder who has submitted the lowest price quotation, but will take into account all evaluating factors and other factors deem to proper for the evaluation with the TOR documents, technical and financial qualification and capacity of the bidder to execute the work promptly and vigorously in such manner as to secure the delivery and/or completion within time specified.

#### 5. Scope of work

##### 5.1 Details of Interwoven Plastic Sheet

- 5.1.1 Size of Interwoven Plastic Sheet: width 12 m. length 52 m., total weight is not less than 75 kg/EA. (Percentage error  $\pm 2\%$ )
- 5.1.2 Width of Interwoven Plastic Sheet is not less than 100 cm. Joint of each sheet shall be overlapped and sewed as specified in attached Drawing.
- 5.1.3 The center joint of Interwoven Plastic Sheets shall be covered by the Double Side Laminate Coating Fabric Plastic Sheet with width length 1.0-1.8 m.
- 5.1.4 Edge of Interwoven Plastic Sheets shall be covered by double side laminate coating fabric plastic sheet width 30 cm. with different color from Interwoven Plastic Sheets. The Eyelet shall be pierced at edge line every 1 and 0.5 meter as attached Drawing. Size of eyelet is  $\frac{3}{4}$  inch or Number 32.
- 5.1.5 Interwoven Plastic Sheets shall be marked with the number in white color on the position as specified in attached drawing (4 positions/EA). Size of number: width = 30 cm. Height = 60 cm. and number are 1/2025 – 300/2025 respectively.

- 5.1.6 Specification of Interwoven Plastic Sheets Single and Double side Laminate Coating as follows.
- 5.1.6.1 Single side laminate coating fabric plastic sheet
- Weight of single side laminate coating fabric plastic sheet is not less than 120 gram/m<sup>2</sup>.
  - Fiber composition
- 5.1.6.2 Double side laminate coating fabric plastic sheet
- Weight of double side laminate coating fabric plastic sheet is not less than 170 gram/m<sup>2</sup>.
- 5.1.7 Mechanical Properties of Interwoven Plastic Sheets: single side laminate coating fabric plastic sheet via experiment validation by Thai Industrial Standards Institute (TISI 729-2553) as follows.
- 5.1.7.1 Ultimate tensile strength in the warp direction is **not less than 840 N**
- 5.1.7.2 Ultimate tensile strength in the weft direction is **not less than 840 N**
- 5.1.7.3 Elongation Percentage at break in the warp direction is **not less than 18 %**
- 5.1.7.4 Elongation Percentage at break in the weft direction is **not less than 18 %**
- 5.1.8 The Contractor shall fulfill all requirements as HPC specified. If the Contractor has any inquiries, the Contractor shall seek HPC advice.

## 6. Inspection and Acceptance

- 6.1 Physical and Mechanical Properties Inspection
- 6.1.1 During sewing production, HPC will send the representative to inspect and random check the sample product totally 2 sets (1 set = single side laminate coating fabric plastic sheet 1 × 1 m<sup>2</sup> amount 1 EA and double side laminate coating fabric plastic sheet 1 × 1 m<sup>2</sup> amount 1 EA). One set will be kept by the Employer for reference and the other set, HPC will be tested as specified in **item 5.1.6 and 5.1.7**.
- 6.1.2 HPC will send the Product Samples as item 6.1.1 to test physical and mechanical properties as specified in item 5.1.6 and 5.1.7 respectively. The test result will be taken into account for acceptance. All costs related to such inspection shall be borne by the Employee.
- 6.2 Acceptance inspection
- 6.2.1 HPC will randomly check the product (not less than 2 EA per lot). If any unqualified product is found, HPC shall check 100% of the product and accept only the products which pass the qualification.
- 6.3 Acceptance
- 6.3.1 The Employee shall partial deliver 300 completed products at Hongsa site, Hongsa District, Xayaburi Province, Lao PDR within **31 October 2025**, 300 ea in 2026 and 300 ea in 2027.
- 6.3.2 Total weight, size and sewing details of product are completed as HPC requirement.

**7. Payment**

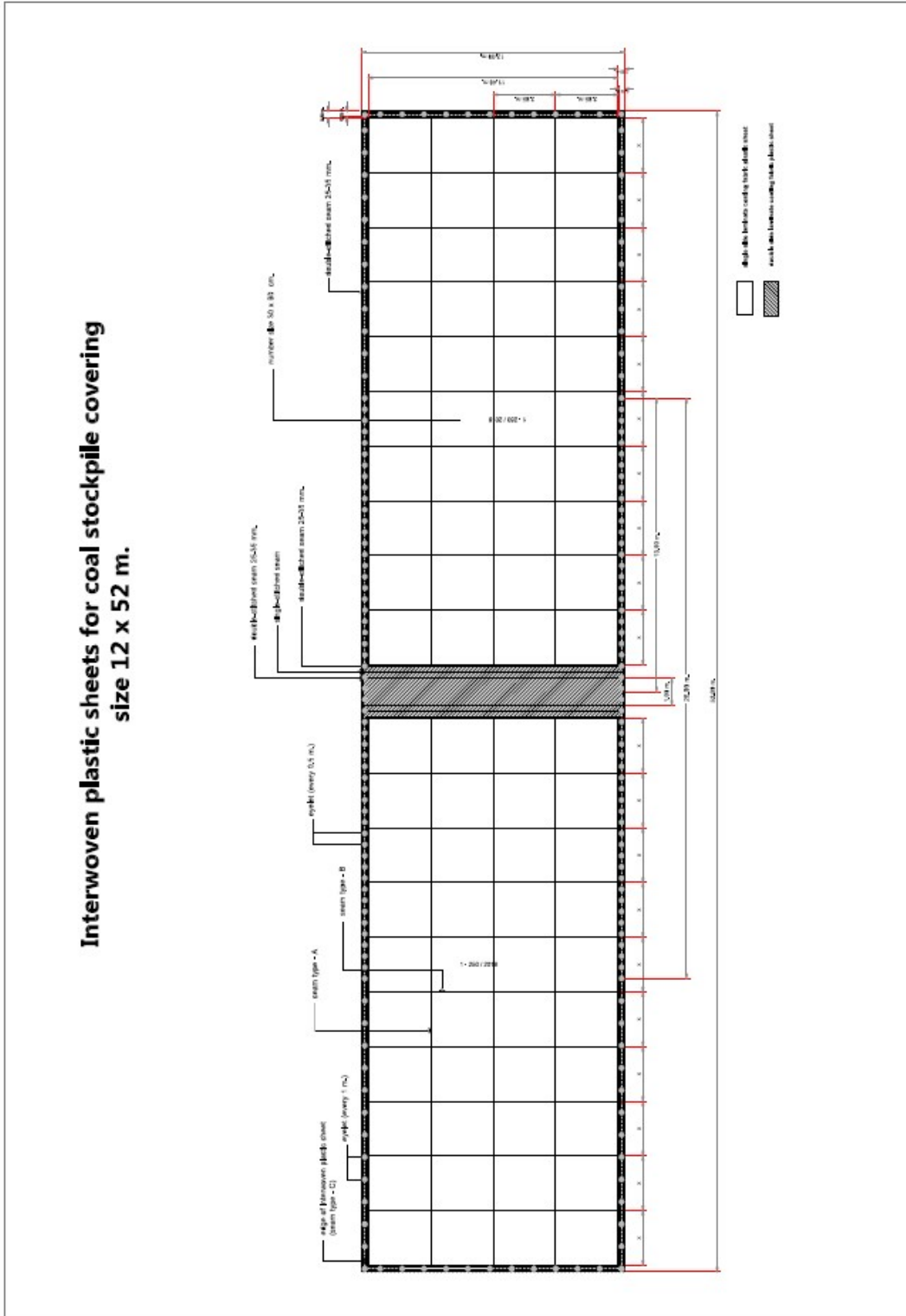
The Payment shall be made based on the quantity of product lot which are inspected and accepted by HPC.

**8. Delay Liquidation**

If the Employee fails to achieve any delivery schedule under clause 6, the Employee shall pay the delay liquidated damages in daily rate 0.1% of the total price of undelivered Goods for each day of delay with maximum amount 10% of the total price of delayed goods.

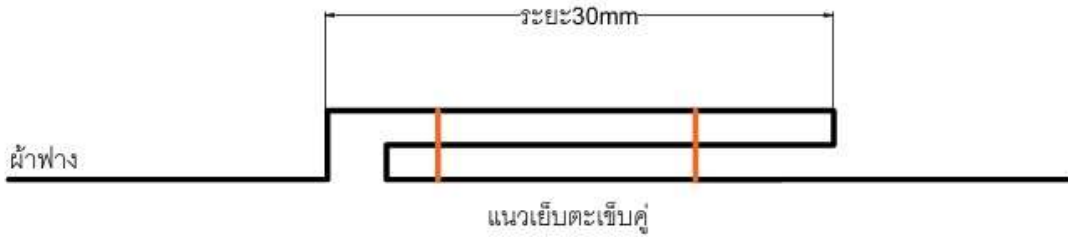
# ANNEX

**ANNEX I: The interwoven plastic sheet design (size 12 x 52 m.)**

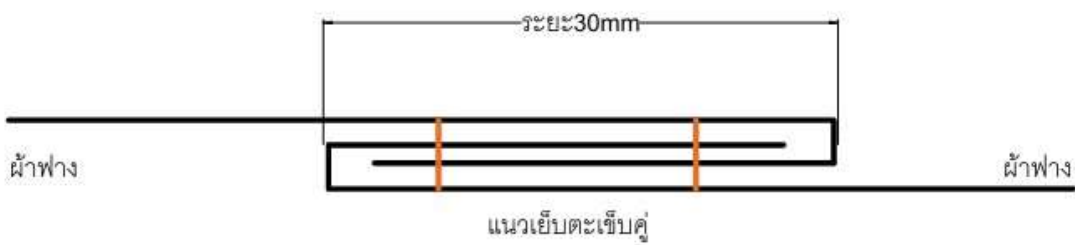


## ANNEX II: Type I Details of the interwoven plastic sheet

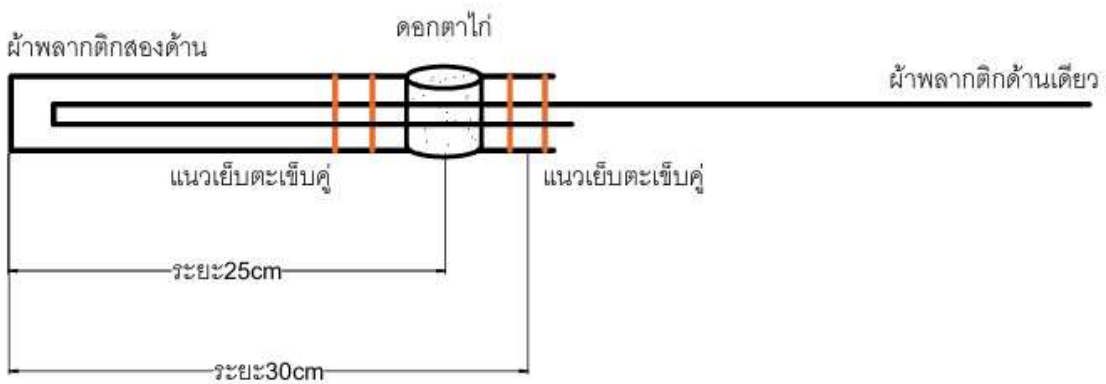
### ยกสัน ส่วนขยาย A



### รอยต่อผ้า ส่วนขยาย B



### ขอบผ้า ส่วนขยาย C





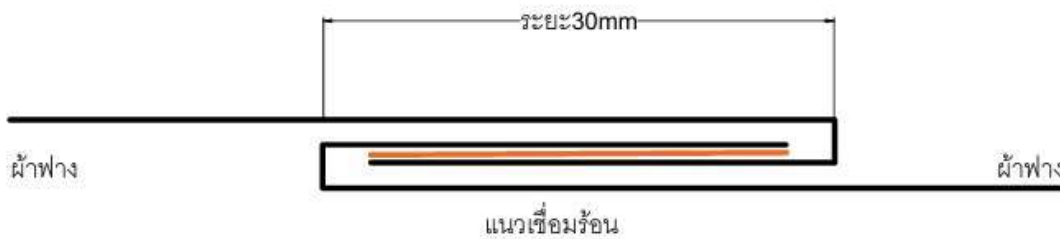
**ANNEX II: Type II Details of the interwoven plastic sheet**

ANNEX II Type II Details of the interwoven plastic sheet

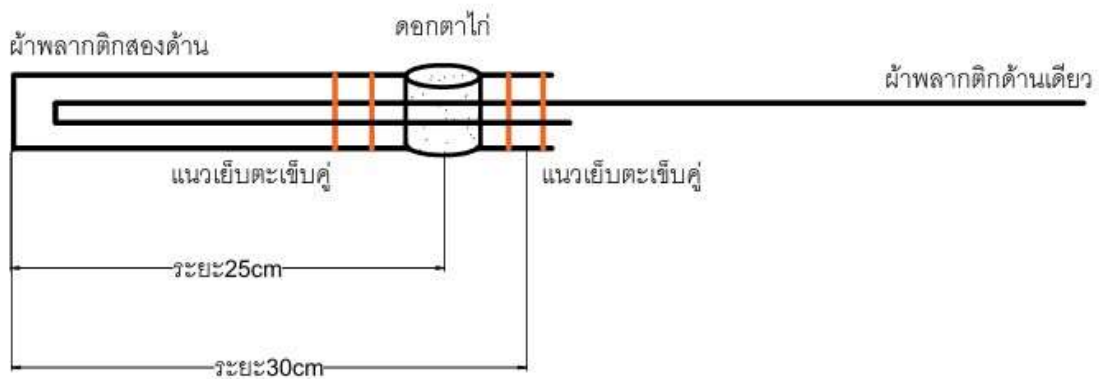
ยกสัน ส่วนขยาย A

ไม่มี ส่วนขยาย A

รอยต่อผ้า ส่วนขยาย B



ขอบผ้า ส่วนขยาย C



**ANNEX III: Price bid**

Item	Description	Qty		Bidder's Proposal		Remarks
				Unit Price	Total Price	
				THB	THB	
1	Interwoven plastic sheet	300	EA			including delivery cost, DAP Hongsa

**ANNEX IV: Commercial bid**

No	Description	HPC's preference	Bidder Confirmation
1	<b>PRODUCT</b>	Interwoven plastic sheet 300 EA	
2	<b>PROPOSAL VALIDATION</b>	60 days	
3	<b>DELIVERY SHCHEDULE</b>	1 <sup>st</sup> Lot: Deliver within 31 May 2025 (50 EA)	
		2 <sup>nd</sup> Lot: Deliver within 30 June 2025 (50 EA)	
		3 <sup>rd</sup> Lot: Deliver within 31 July 2025 (50 EA)	
		4 <sup>th</sup> Lot: Deliver within 31 August 2025 (50 EA)	
		5 <sup>th</sup> Lot: Deliver within 30 September 2025 (50 EA)	
		6 <sup>th</sup> Lot: Deliver within 31 October 2025 (50 EA)	
4	<b>DELIVERY TERM</b>	DAP Hongsa (Incoterms® rules 2010)	
5	<b>WARRANTY</b>	Minimum 6 months from date of shipment	
6	<b>TERMS OF PAYMENT</b>	Credit 30 days after goods are delivered at Hongsa site and accepted by HPC	
7	<b>LIQUIDATED DAMAGE</b>	The vendor will pay the delay liquidated damages in daily rate 0.1% of the total price of undelivered Goods for each day of delay with maximum amount 10% of the total price of delayed goods	



**ANNEX V: Specification of the interwoven plastic sheet**

Item	Description	Unit	HPS's Requirement	Bidder Confirmation	Remarks
1	Width	m.	12		
2	Length	m.	52		
<b>Single side laminated coating fabric plastic sheet</b>					
3	Weight	g/m <sup>3</sup>	≥ 120		
4	Fiber composition	-	Polypropylene or as per supplier proposal		
5	Tensile strength				
	- Warp direction	N	≥ 900		
	- Weft direction	N	≥ 1000		
6	Elongation percentage at break				
	- Warp direction	%	Min 20		
	- Weft direction	%	Min 19		
<b>Double side laminated coating fabric plastic sheet</b>					
7	Weight	g/m <sup>3</sup>	≥ 170		